



SOUTH PARK AT FRESHKILLS PARK

ANCHOR PARKS PROGRAM COMMUNITY VISIONING

JCC of Staten Island
November 30, 2016

Parks

TONIGHT'S AGENDA

1/ PRESENTATION:

- *PROGRAM OVERVIEW*
- *ABOUT THE PARK*
- *INSPIRATION AND IDEAS*

2/ TABLE ACTIVITIES AND DISCUSSION

3/ COMMUNITY SHARES VISION AND IDEAS



**OUR COMMITMENT:
CREATE A BRIGHT, GREEN FUTURE
WITH A MORE INCLUSIVE
AND INNOVATIVE
PARK SYSTEM**



ANCHOR PARKS | OVERVIEW

NYC PARKS WILL INVEST \$150 MILLION
TO RENOVATE FIVE NEIGHBORHOOD
ANCHOR PARKS—
ONE IN EACH BOROUGH

HIGH-QUALITY PARKS MAKE FOR SAFE,
RESILIENT, AND HEALTHY COMMUNITIES



ANCHOR PARKS | OVERVIEW

NEW INVESTMENTS IN REGIONAL PARKS



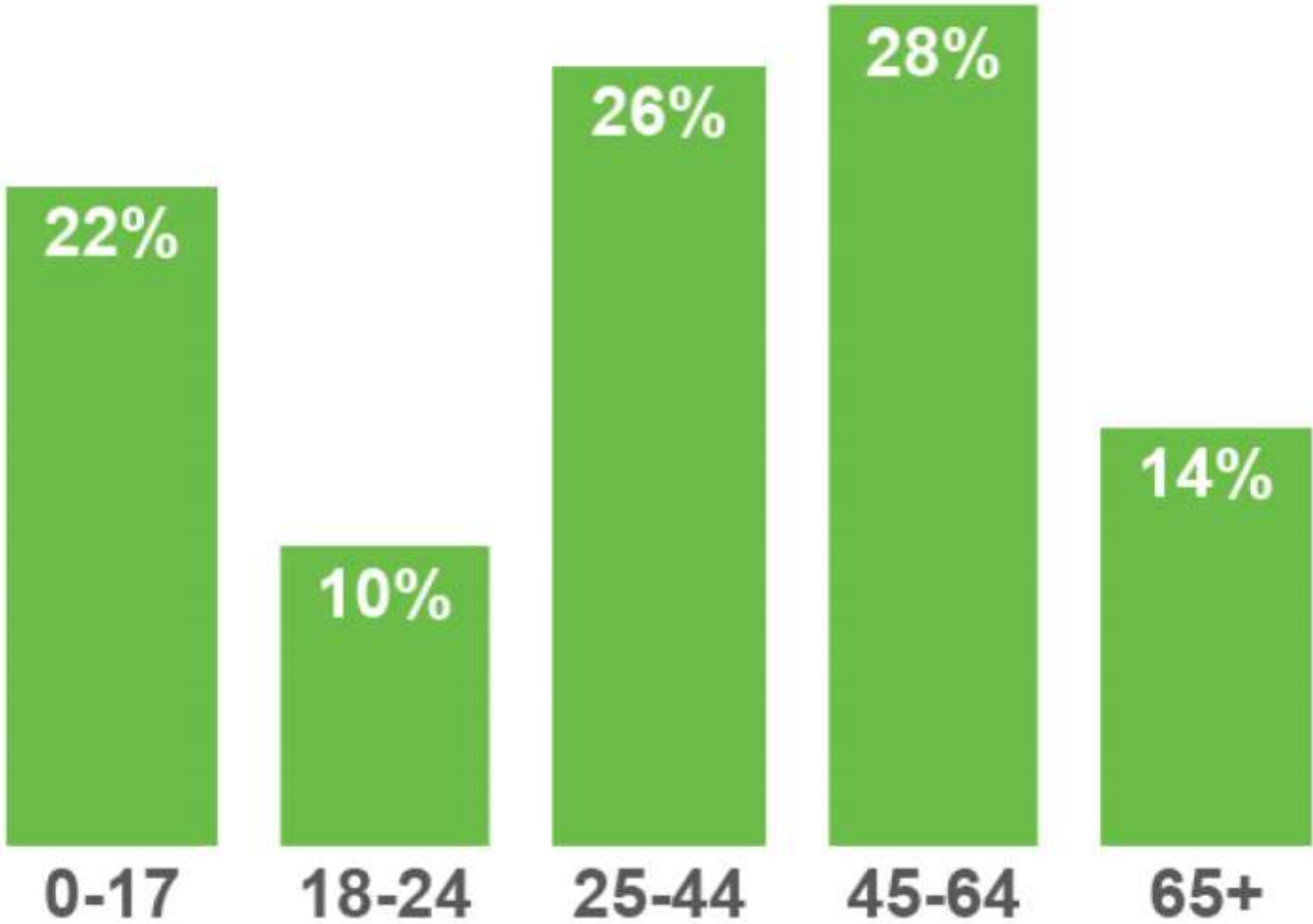
CAPITAL PROCESS SNAPSHOT



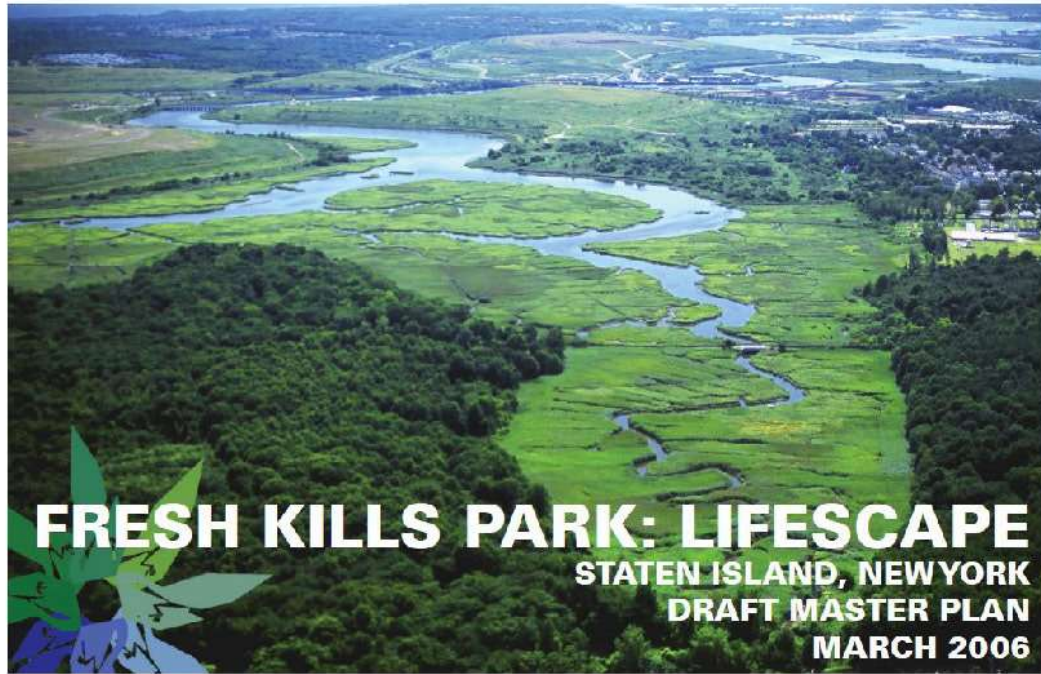
FRESHKILLS PARK LOCATION



STATEN ISLAND POPULATION BY AGE



BUILD ON RECENT AND ONGOING PLANS



Freshkills Park
Draft Master Plan



Freshkills-South Park
Public Design Commission Plan



One New York



SOUTH PARK CONTINUES THE BUILDOUT OF FRESHKILLS PARK

CONTINUED
COMMUNITY
INPUT IS VITAL TO
**TRANSFORMING THIS
FORMER LANDFILL
INTO A PARK**



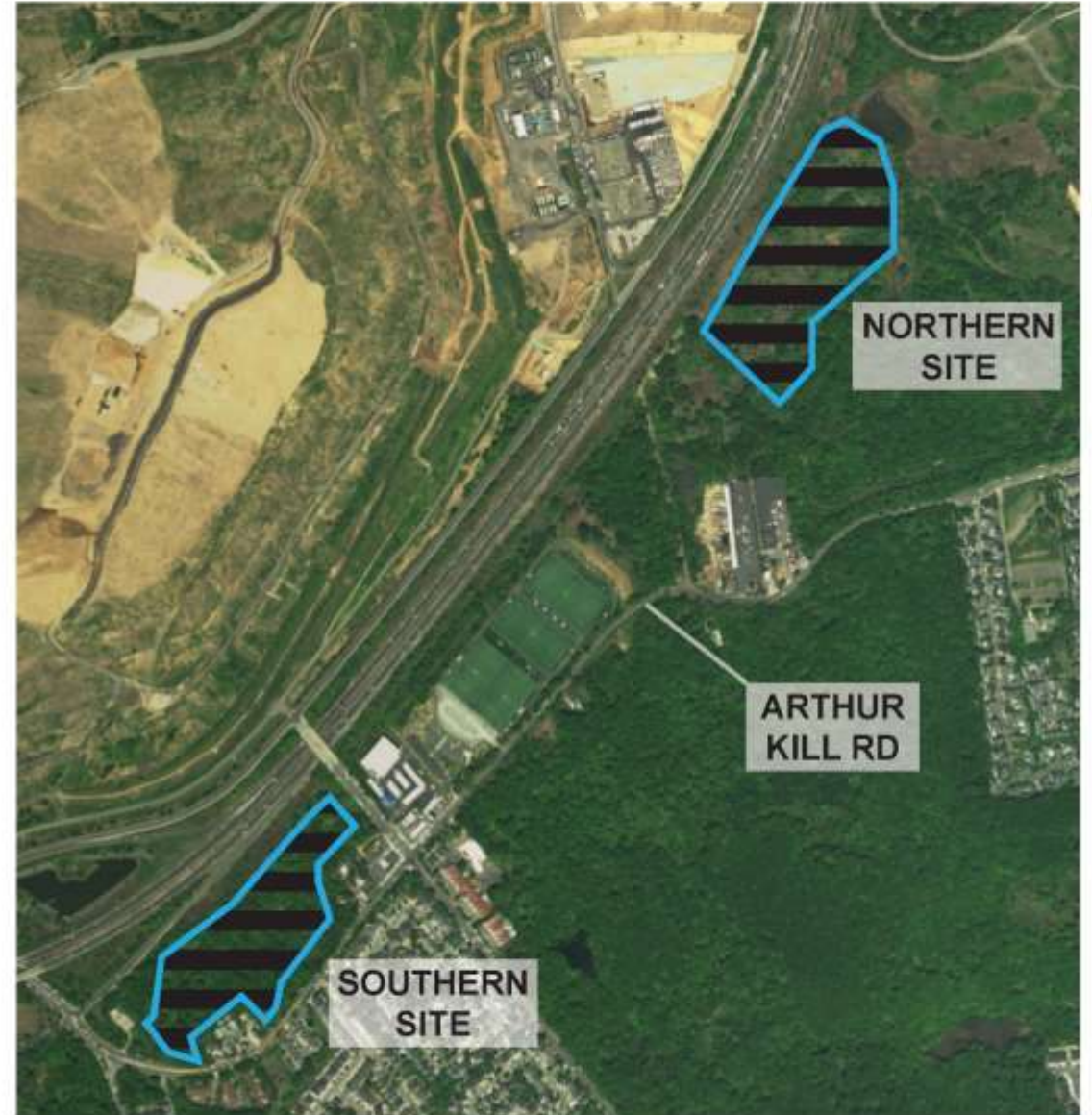
SOUTH PARK CONTINUES THE BUILDOUT OF FRESHKILLS PARK

TWO SITES IN SOUTH PARK WILL BE DISCUSSED TONIGHT



SOUTH PARK PROJECT SITES

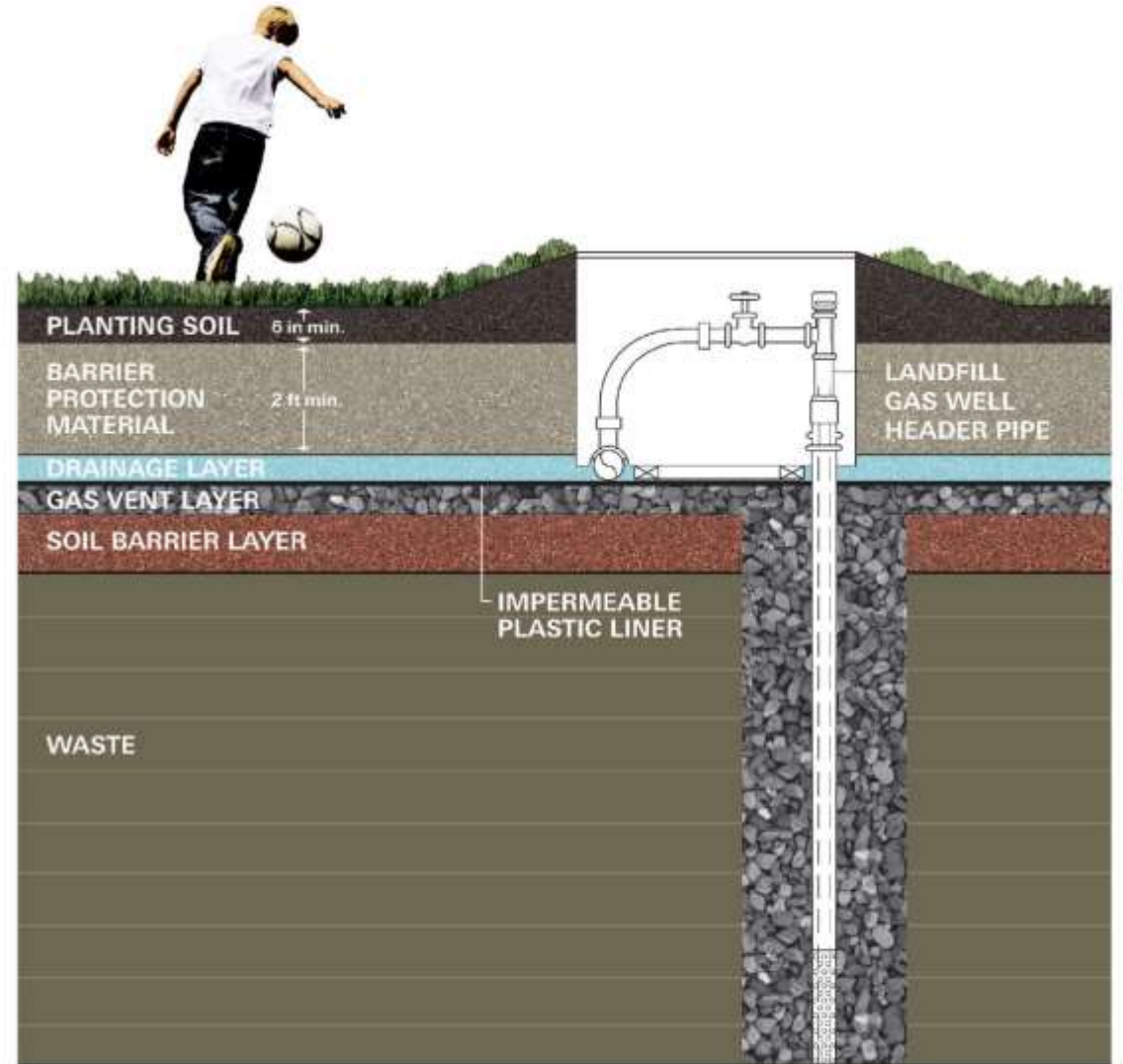
THESE SITES
HAVE IMPORTANT
CONSIDERATIONS
THAT IMPACT DESIGN &
CONSTRUCTION



SOUTH PARK PROJECT SITES

IMPORTANT CONSIDERATIONS

- FRESHKILLS PARK IS BEING BUILT ON A FORMER LANDFILL
- LANDFILL SAFETY FEATURES MUST REMAIN UNTOUCHED
- PORTIONS OF THE SITE ARE COVERED BY WETLANDS
- NEW PARK SHOULD CONNECT TO OWL HOLLOW FIELDS
- TRAFFIC ON ARTHUR KILL ROAD AND ARDEN AVENUE
- HOW WILL ADJACENT NEIGHBORHOODS BE IMPACTED?



LANDSCAPE ARCHITECT'S VISION SOUTH PARK DESIGN (2011)

2011 SOUTH PARK DESIGN INCLUDES:

- BALL FIELDS
- COMFORT STATION
- ENTRANCE AT ARTHUR KILL ROAD
- PARKING
- NATURE TRAILS
- PICNIC AREA
- PLAYGROUND
- TOP OF MOUND ACCESS



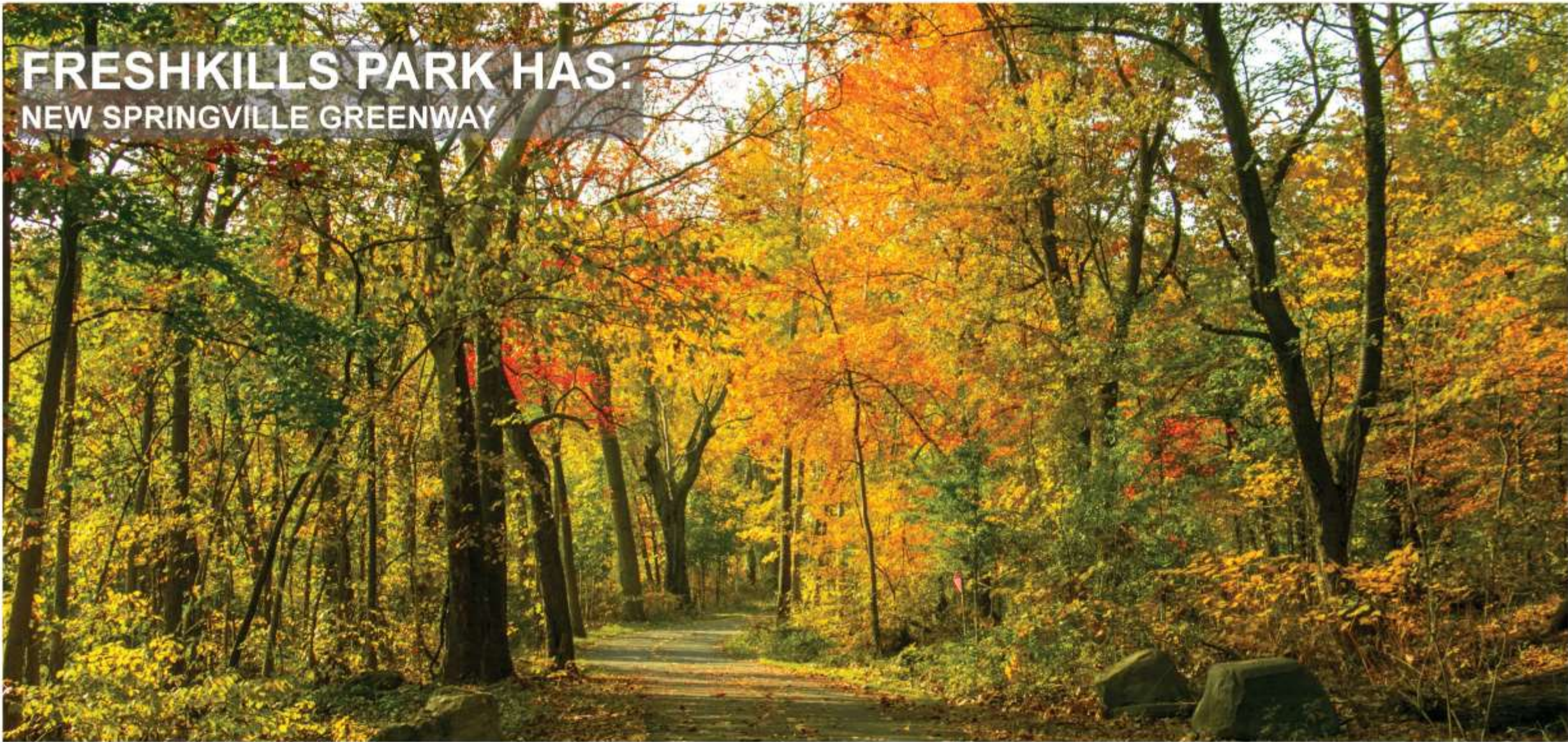
FRESHKILLS PARK TODAY



FRESHKILLS PARK HAS: OWL HOLLOW SOCCER FIELDS



FRESHKILLS PARK HAS: NEW SPRINGVILLE GREENWAY



FRESHKILLS PARK HAS: SCHMUL PARK PLAYGROUND



An aerial photograph of a lush green landscape. In the foreground, there are several winding dirt paths or roads cutting through a field of tall grass and some trees. A small pond is visible in the middle ground. To the right, a multi-lane highway with traffic is visible, curving through the landscape. In the background, there is a dense forest of trees, and further back, a large body of water (likely a lake or reservoir) stretches across the horizon under a clear sky. The overall scene is vibrant and green, suggesting a natural or park-like setting.

WHAT'S YOUR
VISION FOR
SOUTH PARK AT
FRESHKILLS?

BUILD NEW RECREATION AREAS



PROVIDE AMENITIES FOR PARK USERS



DESIGN FOR NATURAL AREA EXPLORATION



PLAN FOR FUTURE PARK ACCESS



CONNECT TO OWL HOLLOW FIELDS



INSPIRATION



BALLFIELDS



SOCCER FIELDS



PARKING



AMPHITHEATERS



ADULT FITNESS



PLAY EQUIPMENT



WALKING PATHS



BICYCLE TRAILS



DISCUSSION

IMPORTANT CONSIDERATIONS

- SIDEWALKS
- PARKING
- LIGHTING FOR SPORTS FIELDS
- COMFORT STATIONS



WHAT COMES NEXT?

THE PRIORITIES YOU IDENTIFIED
WILL HELP US SHAPE OUR
CONCEPT PLAN.

WE WILL REPORT BACK WITH
OPTIONS FOR YOU TO REVIEW AND
COMMENT ON AGAIN THIS WINTER.



STAY IN TOUCH!

nyc.gov/parks/input

WITH ADDITIONAL IDEAS

